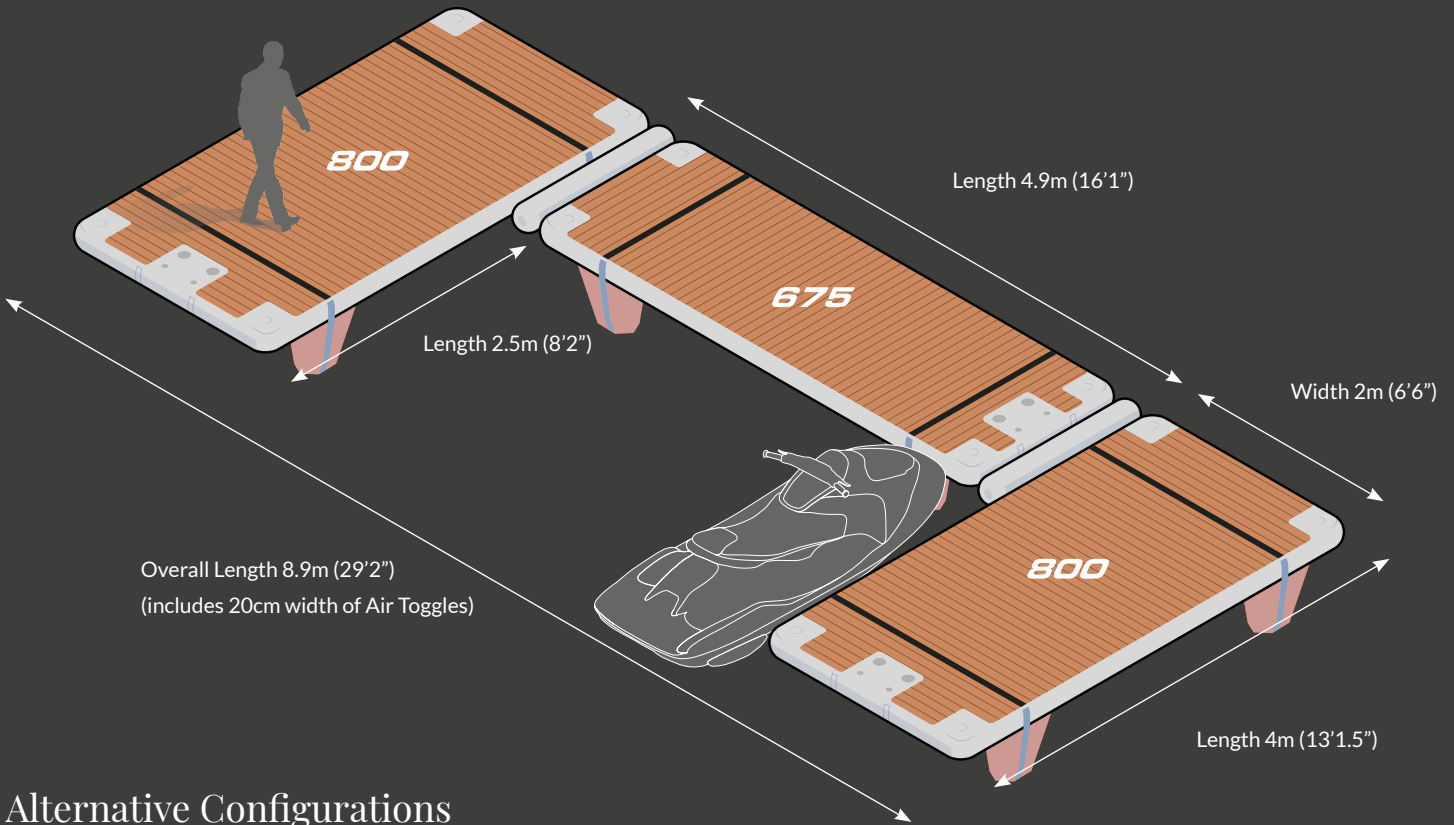
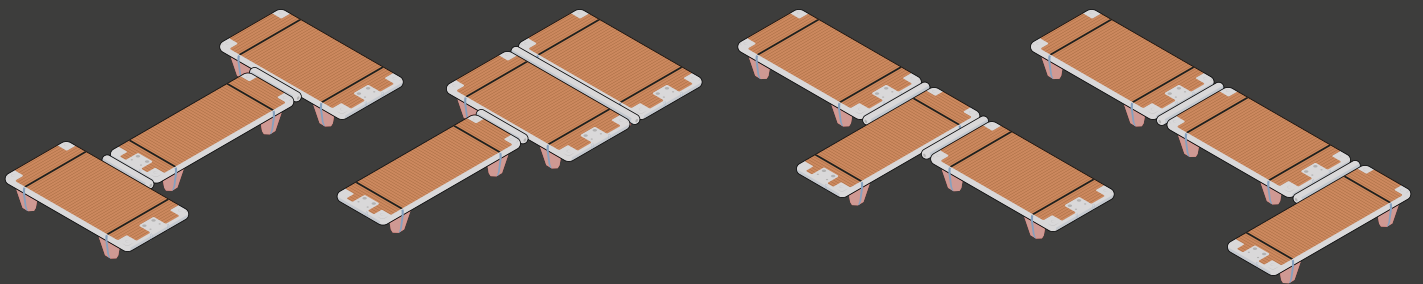


# Tri-Platforms

**675 + 800 + 800**



## Alternative Configurations



## Platform Dimensions

Platform	675	800
Inflated dimensions (20cm deep)	4.5m x 1.5m (14'9" x 4'11")	4m x 2m (13'1.5" x 6'6")
Stowage dimensions	165cm x 38cm x 38cm (5'5" x 1'3" x 1'3")	220cm x 32cm x 32cm (7'3" x 1'1" x 1'1")
Weight/weight in bag	33.5kg/35kg (73lbs/78lbs)	39.5kg/42.5kg (87lbs/94lbs)

## Accessory Pack

With every platform:

- Stowable zipless protective bag (x1)
- Air Toggle for connection (x1)
- Connection straps (x2)

With every order:

- Bravo Electric pump (230v or 120v)
- Bravo Manual/Stirrup pump
- Repair kit with instructions
- Instruction manual

\*Please note, some configurations are only available if only using Voyager platforms.