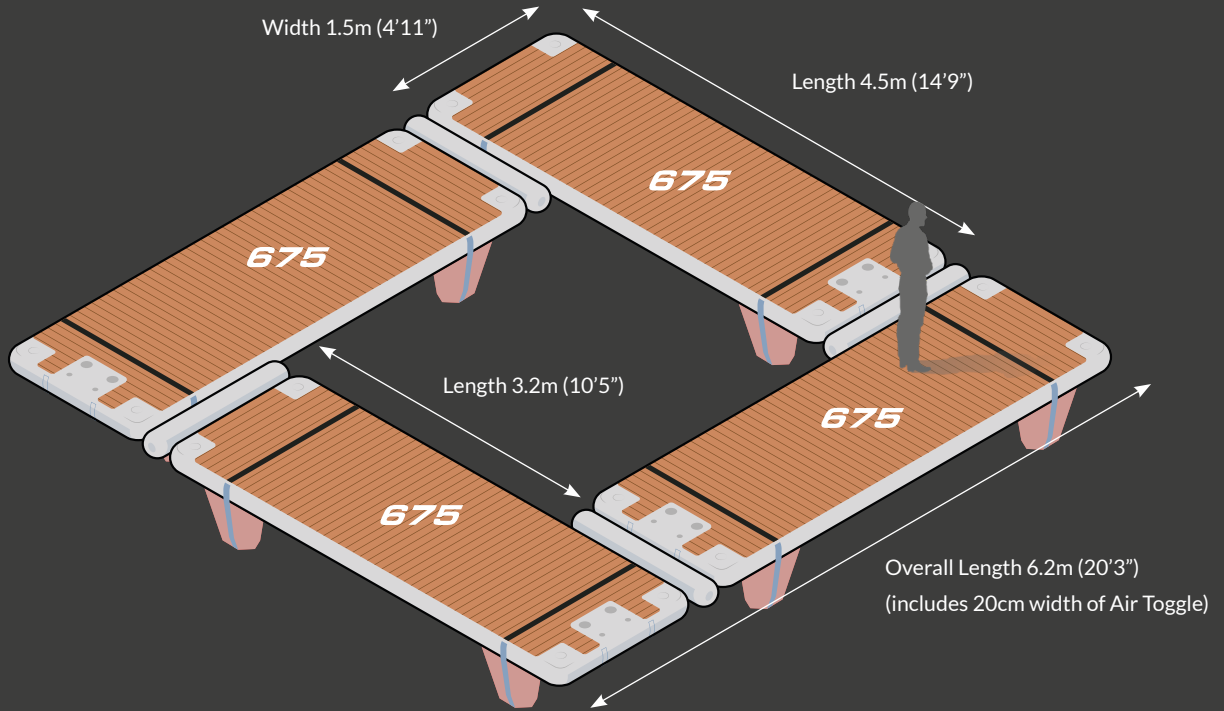
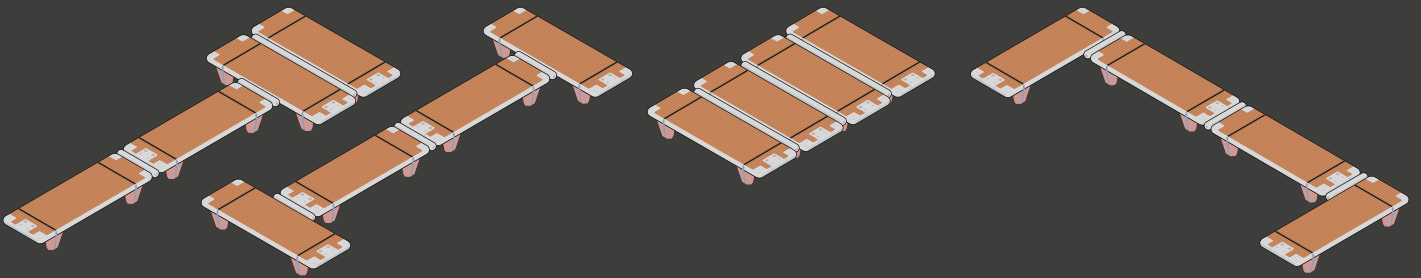


# Quad-Platforms

**675 + 675 + 675 + 675**



## Alternative Configurations



## Platform Dimensions

Platform	<b>675</b>
Inflated dimensions (20cm deep)	4.5m x 1.5m (14'9" x 4'11")
Stowage dimensions	165cm x 38cm x 38cm (5'5" x 1'3" x 1'3")
Weight/weight in bag	33.5kg/35kg (73lbs/78lbs)

## Accessory Pack

- With every platform:
- Stowable zipless protective bag (x1)
  - Air Toggle for connection (x1)
  - Connection straps (x2)
- With every order:
- Bravo Electric pump (230v or 120v)
  - Bravo Manual/Stirrup pump
  - Repair kit with instructions
  - Instruction manual

\*Please note, some configurations are only available if only using Voyager platforms.