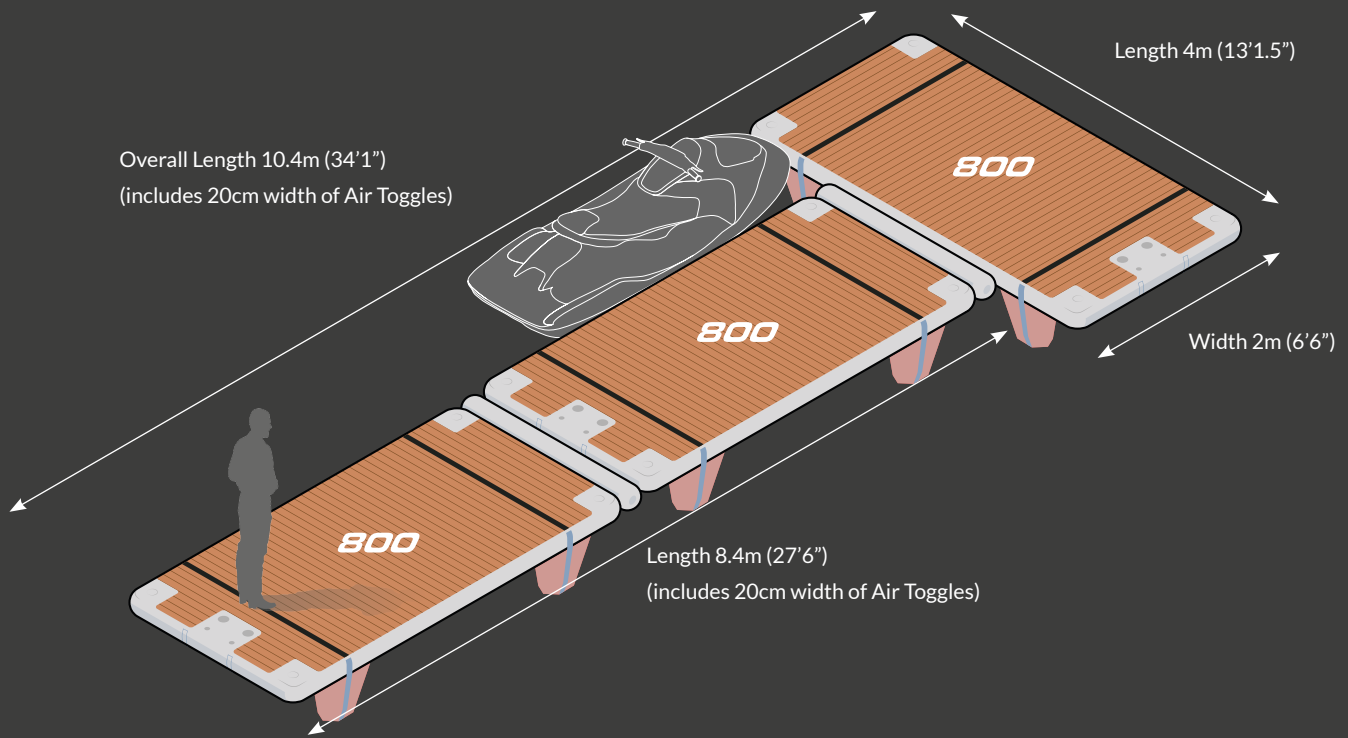
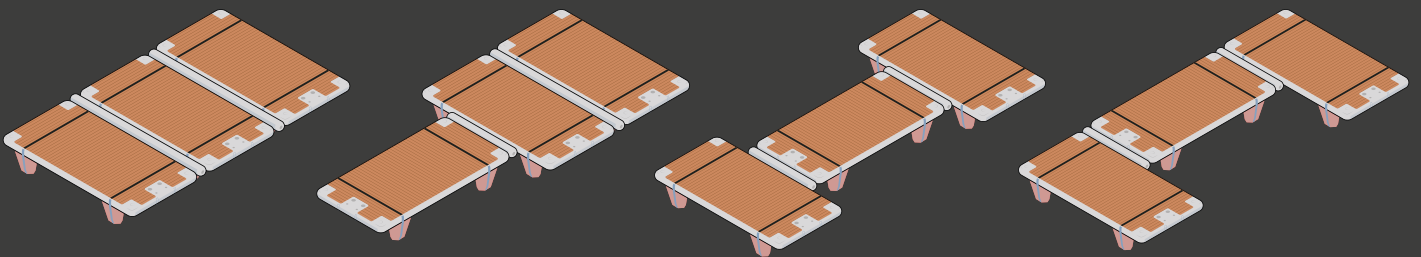


Tri-Platforms

800 + 800 + 800



Alternative Configurations



Platform Dimensions

Platform	800
Inflated dimensions (20cm deep)	4m x 2m (13'1.5" x 6'6")
Stowage dimensions	220cm x 32cm x 32cm (7'3" x 1'1" x 1'1")
Weight/weight in bag	39.5kg/42.5kg (87lbs/94lbs)

Accessory Pack

- With every platform:
- Stowable zipless protective bag (x1)
 - Air Toggle for connection (x1)
 - Connection straps (x2)

- With every order:
- Bravo Electric pump (230v or 120v)
 - Bravo Manual/Stirrup pump
 - Repair kit with instructions
 - Instruction manual

*Please note, some configurations are only available if only using Voyager platforms.